

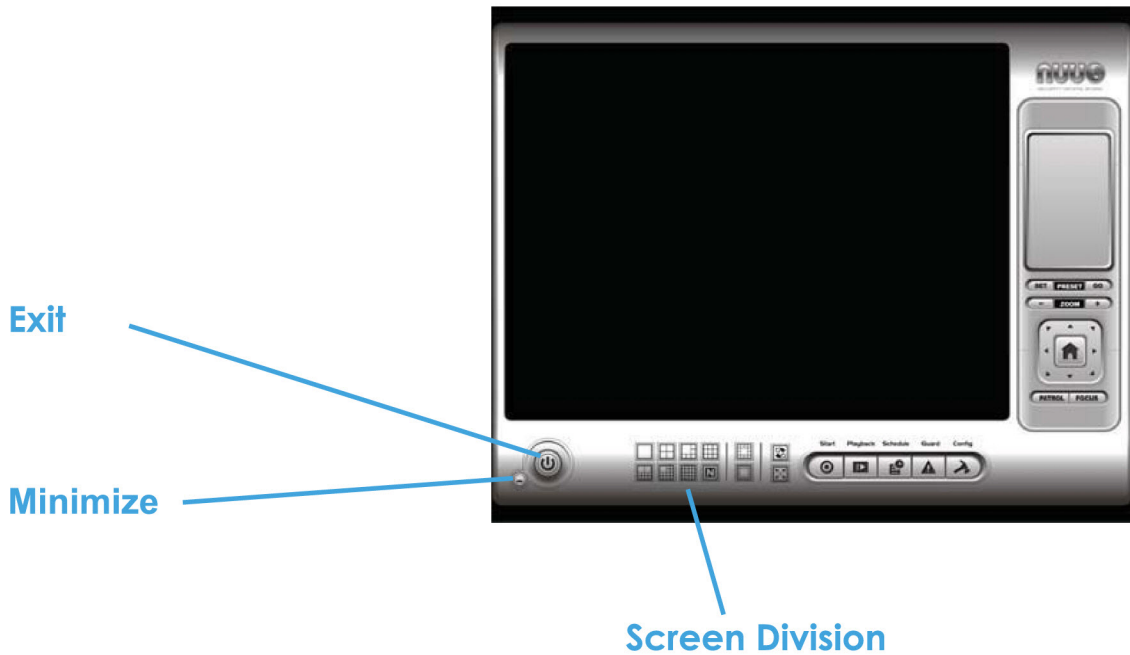
1. Main Console

1. Main Console



This is the main operation system - to activate, schedule recording, setup smart guard and configure system setting.

1. Main Console


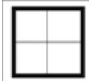

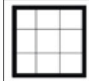
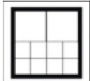
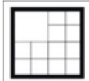
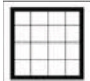

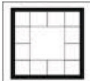
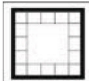




EXIT: Shut down the Surveillance System or log out current user.

MINIMIZE: Minimize the Main Console window.



SCREEN DIVISION: Allocate the sub-screen display by clicking on the desired layout icon. To switch to single camera display, double click on a particular sub-screen. Double click on the screen again to regain previous screen division layout.

- | | | | |
|--|--|--|---|
|  Divide into 1 screen(s) |  Divide into 4 screen(s) |  Divide into 6 screen(s) |  Divide into 9 screen(s) |
|  Divide into 10 screen(s) |  Divide into 13 screen(s) |  Divide into 16 screen(s) |  Divide into N screen(s) |
|  Divide into 13 screen(s) |  Divide into 17 screen(s) |  Switch to Full screen |  Rotate all screens |

1. Main Console

1.1 Start

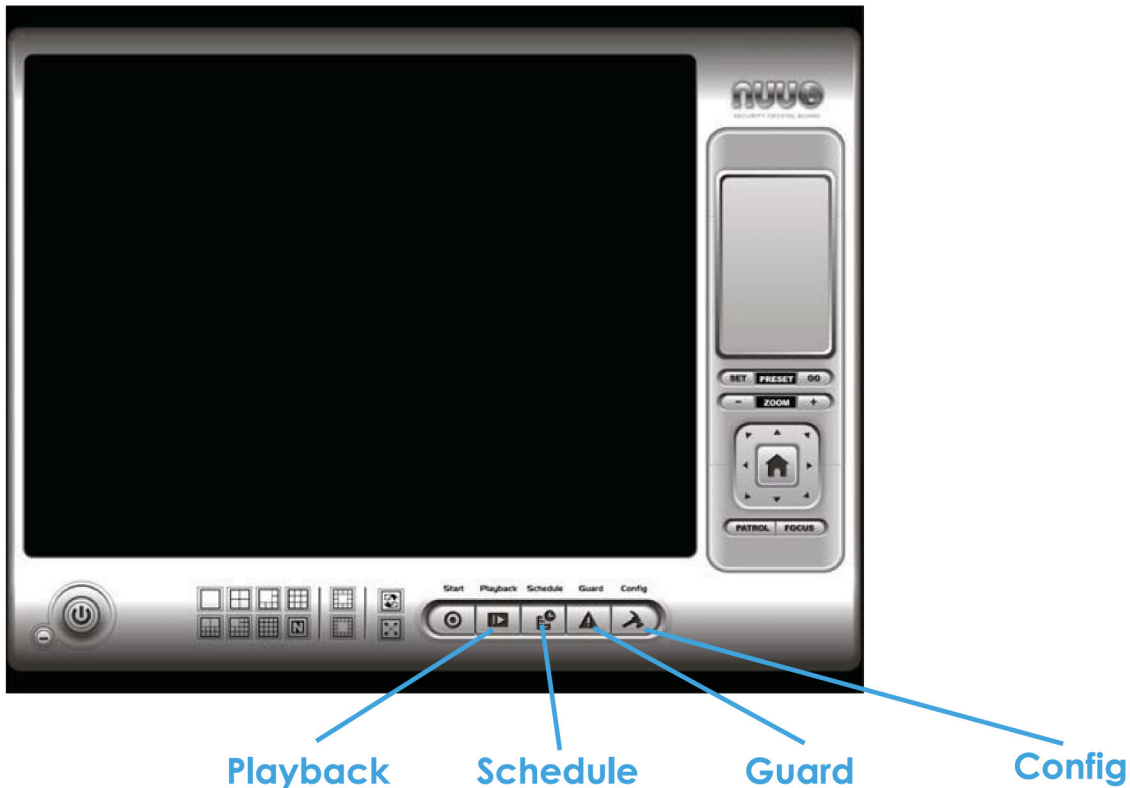


START: Click on the Start icon and select from the drop down menu to activate/ deactivate: (a) Recording Schedule System, (b) Smart Guard System, or (c) Counting Application. Select Start/Stop Monitor All to activate/ deactivate all the functions at once.

You may also enable secondary display, open event report, and lock the system here. See page 78 for more details about secondary display.

Note: When activating any of the monitor functions, system considers the current screen status as normal. Therefore, if you want to, for example, detect Missing Object, be sure the object needed to be protected is in its position at the moment you click Start button.

1. Main Console



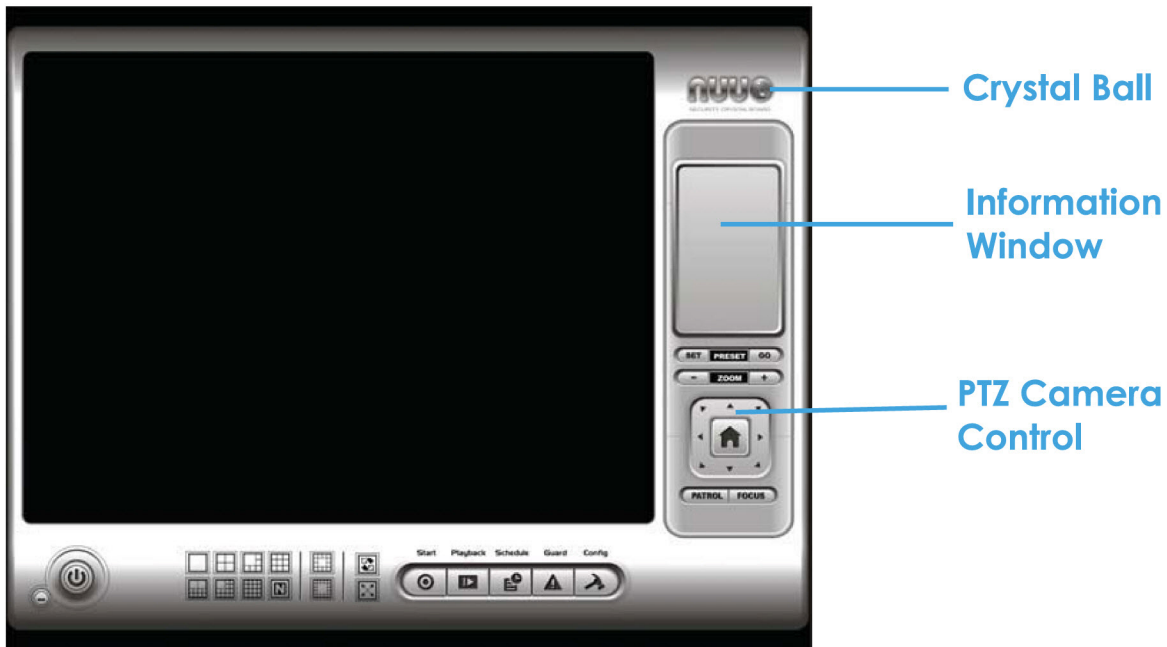
PLAYBACK: Click on the icon to get Playback Console. You can watch recorded video, search recorded video, adjust image of the stored data, save video/ pictures, print images, check log information and event records, and set up recording function configuration. See Playback on page 21 for detail.

SCHEDULE: Organize recording time schedule and setup recorder configuration. See Schedule on page 37 for detail.

GUARD: Add/edit type(s) of events that you want to detect; setup reaction(s) responding to events. See Guard on page 45 for detail.

CONFIG: Select from the drop down menu to modify general setting, save/ load configuration settings, start counting application, access log viewer and backup files, or setup network services. See Config on page 65 for detail.

1. Main Console



1.2 Crystal Ball: Indicate the working status of the system. Gray – at rest, Blue - recording, and Red – events detected. When the crystal ball is red, click it to cancel the event(s).

1.3 Information Window: Display date, time, free HD space, CPU temperature, fan speed, and customized text. To customize Information about window's setting, go to Config > General Setting > General

1.4 PTZ Camera Control: Control the movement of PTZ cameras. With cameras that support PTZ control, you can move, zoom, patrol, adjust the focus, and set preset points of the cameras.

1.4.1 Preset/ Go: Adjust the camera view until you are satisfied. Click on the Set icon and set up the view as the preset point 01. Adjust the camera view again and set up the preset point 02. Repeat the process until finish setting up all preset points. You can enter any names you like to instead of the preset point 01, preset point 02, preset point 03,...

Click on the Go icon and view the result of your setting.

1.4.2 Zoom: Click on the + and – signs to zoom in and zoom out the view.

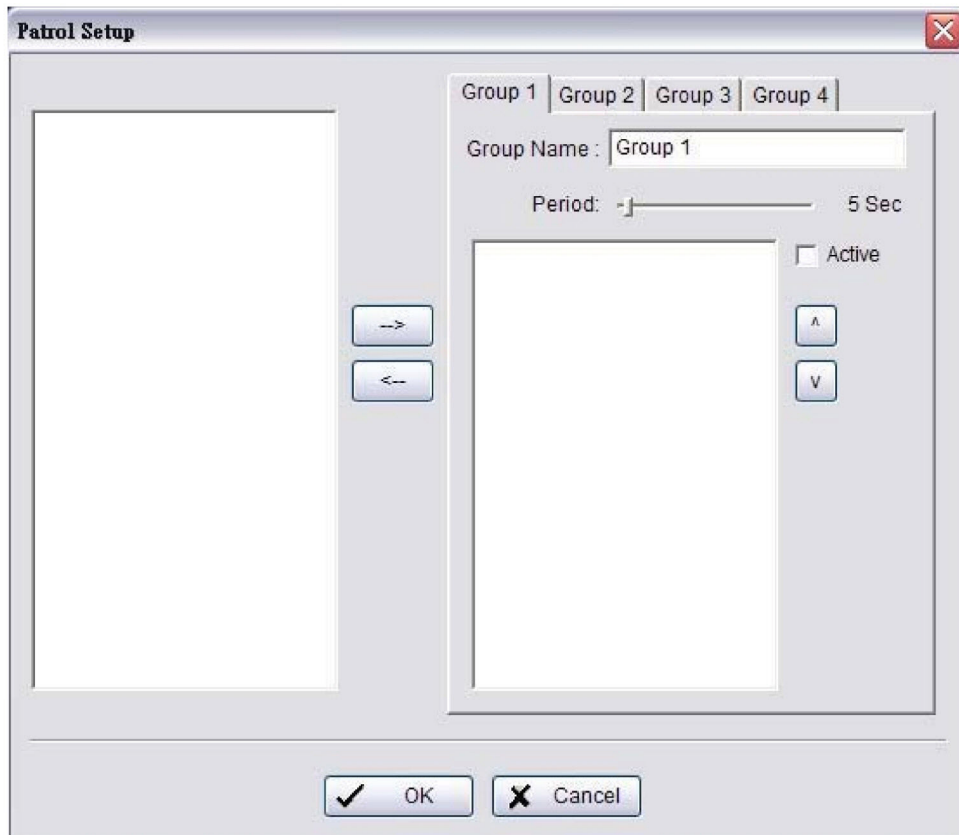
1. Main Console

1.4.3 Focus: You can select to have the camera focused near or far. To focus near means objects that are closer will be clearer than the objects that are further away. On contrast, to focus far means objects that are further will be clearer than the objects that are closer.

Click on the Focus icon and select auto focus if you want the system to decide the focus point for you.

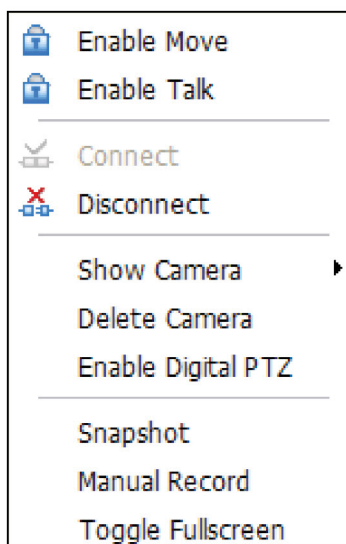
1.4.4 Patrol: Go to Patrol > Set Patrol to obtain the Patrol Setup dialog. From the left window, select the cameras that you would like to have in the patrol group. Align the cameras in order in the right window and adjust the time. Rename the group name if you want. After completing the setup, check the Active option, and then click OK.

You can setup up to four groups of auto patrol. To start or stop, click on the Patrol icon in the Main Console, and select Start Patrol or Stop Patrol.



1. Main Console

1.5 On Screen Menu



Right click on the camera screen and get the On Screen Menu, from which you can [enable move](#), [enable digital PTZ](#), and [connect/ disconnect](#) the camera.

1.5.1 Enable Move: With cameras that support PT function, by selecting the enable move function, you may adjust the camera's view by clicking on the display screen. To cancel this function, right click on the screen and select [Disable Move](#).

Note: You can only work on current camera after clicking [Enable Move](#).

1.5.2 Enable Talk: With cameras that support two-way audio, you may select enable talk to utilize the function.

1.5.3 Connect/ Disconnect: Right click on the display screen and select Connect/ Disconnect to modify the connecting status of the camera.

1.5.4 Show Camera: Select the camera to be displayed from the Show Camera Menu.

1.5.5 Delete Camera: Click on Delete Camera to remove a camera from the display screen. This does not delete the camera from the setting list.

1.5.6 Enable Digital PTZ: To enable the PTZ functions of the camera, select the Enable digital PTZ option. When enable digital PTZ, we can use mouse wheel to zoom in and zoom out on the camera.

Note: [Enable Digital PTZ](#) is the option function in IP+ software not in IP software

1.5.7 Snapshot: Select the snapshot function to capture a specific video image immediately. You have the options to copy the image to the clipboard or to save it.

1.5.8 Manual Record: Start recording video by selecting manual record.

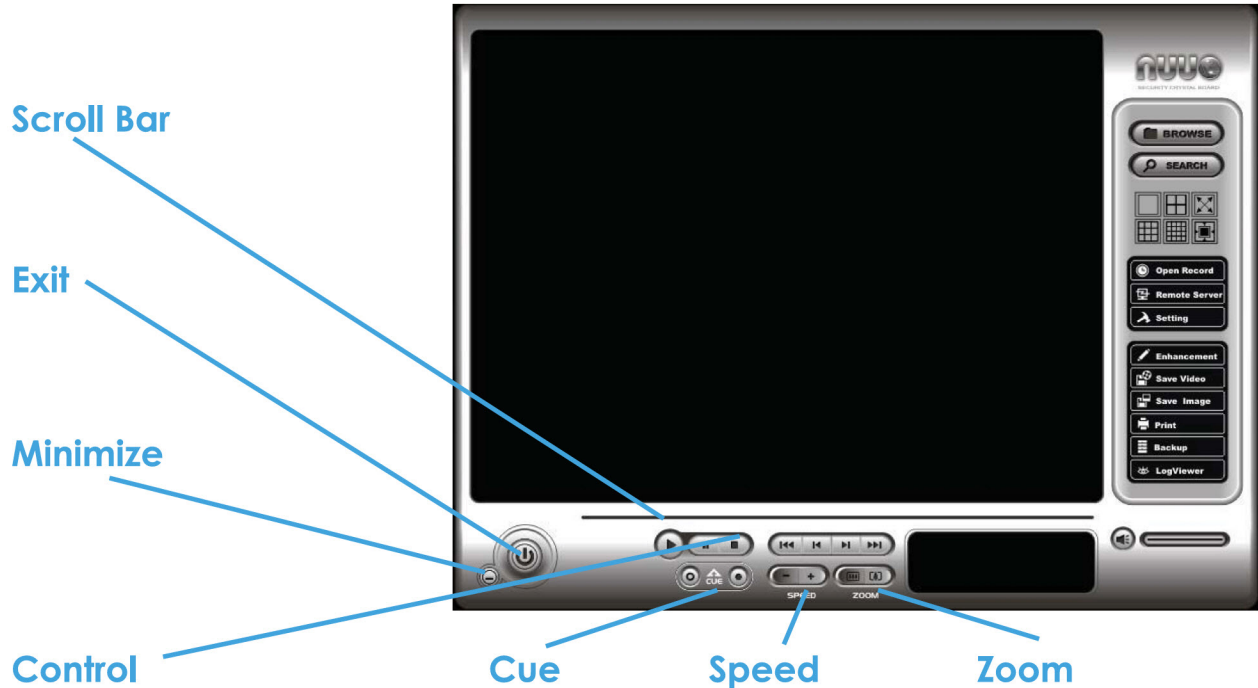
1.5.9 Toggle Full Screen: To view a specific channel with full screen.

2. Playback



Watch the recorded video, view and/or search for unusual events and recorded system information.

2. Playback



MINIMIZE: Minimize the Playback console.

EXIT: Shut down the Playback console.

SCROLL BAR: Indicate the status of the playing video; drag it to where you want to review.

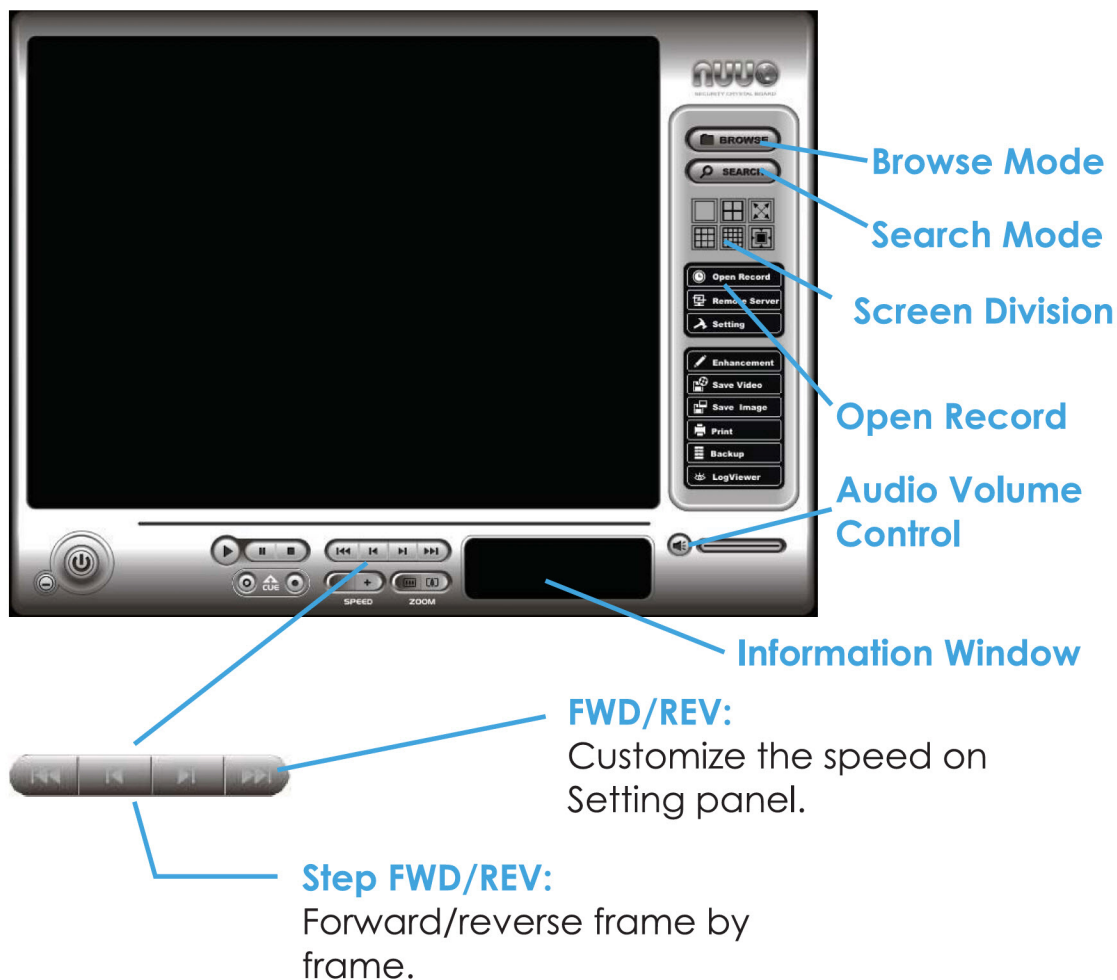
CONTROL: Play, pause and stop the video.

CUE: When playing video, click on the Cue In/ Cue Out icon at where you want to set as the starting/ ending point of a saved video clip. The Cue In and Cue Out time will be displayed on the Playback Information Window once they are set.

SPEED: Control the speed of the playing video. Click + to speed up and – to speed down.

ZOOM: Zoom in and zoom out. Get a close up view of the recorded video; move to the spot you want to view by dragging the screen.

2. Playback



2.1 Information Window: Display video date and time, current video status, cue in/ out points' time, and speed.

2.2 Audio Volume Control: Adjust the sound level.

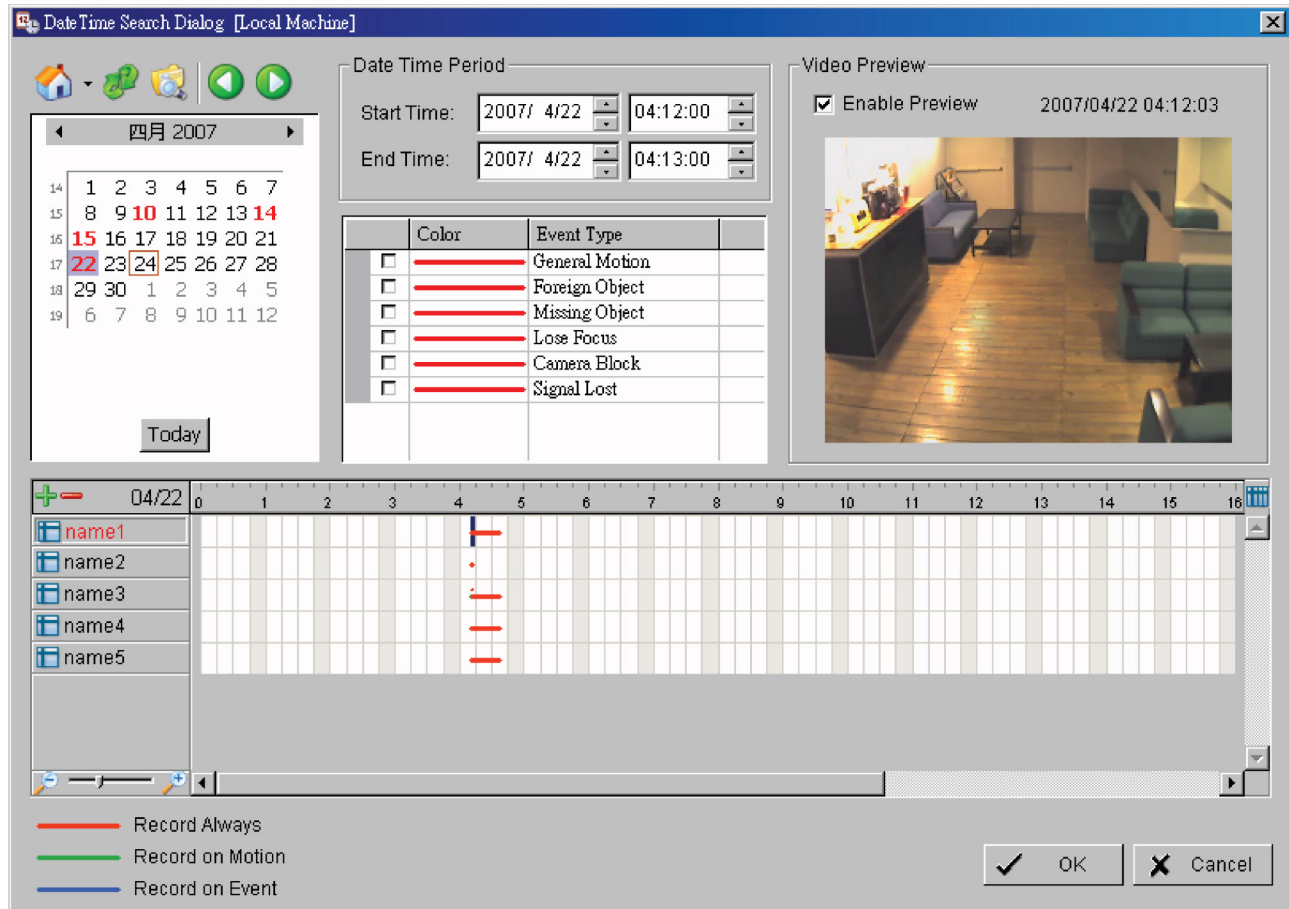
2.3 Screen Division: Allocate the sub-screen display by clicking on the desired layout icon. To switch to single camera display, double click on a particular sub-screen. Double click on the screen again to regain previous screen division layout.

2.4 Browse Mode: Play the recorded video.


2.5 Open Record: Click on Open Record button to access the Date-Time Panel and withdraw the video record that you want to review.


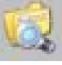


2. Playback

2.5.1 Date Time Panel



2.5.2 Record Display Window: The record display window shows the information of the available video clips. It may show in calendar or list control view. For further details about how to modify the record display window view, see page 35.

Click on the  icon on the top of the display window to obtain the Remote Playback Site Management dialog. You may select to access local machine or set up remote playback server. See page 36 for more details about setting up the remote playback server.



Click on the  icon to refresh the record display window, and click on the  icon to access the log viewer dialog. See Page 32 for more details about the log viewer dialog. Additionally, utilize the   icons to go to previous and next recording Date.

2. Playback

2.5.3 Date Time Period: Select the start and end time points that indicate the time period you would like to view.

2.5.4 Video Preview: Check the enable preview option to view the selected video.

2.5.5 Event Type: There are 6 event types; see Chapter 4 Guard for details. You may set up different colors for different event types to help you select events.

2.5.6 Time Table: Utilize the  icon to select all channels; also utilize the  icon to deselect all channels. Finally, utilize the scale bar



to modify the scale of the time table.

2.5.7 To Withdraw the Record:

Step 1: From the record display window at the top left of the Date Time Panel, select the date you want to withdraw the record from. The red/green/blue lines shown on the time table indicate available recorded video records.

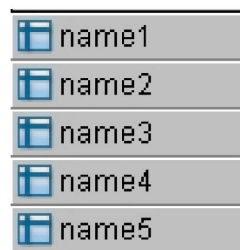
Note: The record display window can be shown in (a) calendar view or (b) list control view. To modify the setting of the record display window, click on the Setting button at the right of the Playback Console. See page 35 for more details.

Step 2: Use color bars to differentiate event types from each other. This will help you select video clips.

Step 3: Highlight the video clip you want to review by left-clicking and dragging the time period. You may also utilize the Start Time and End Time in Date Time Period Section. In addition, modify the scale of the time table with the + and – signs on the bottom left.

Step 4: Check the Enable Preview option to get the preview of the video you select.

Step 5: Click the camera name to increase or decrease cameras you want to playback.



2. Playback

Step 6: Click OK when completing the setting.

2.6 Search Mode: Click on the Search Mode icon to obtain the Intelligent Search Tool panel. You can setup unusual events here to detect abnormality occurred during the recording period.

Intelligent Search Tool Panel: Click on the Search Mode icon and get the Intelligent Search Tool panel. Set up unusual events here to detect abnormality that occurred during the recording period.

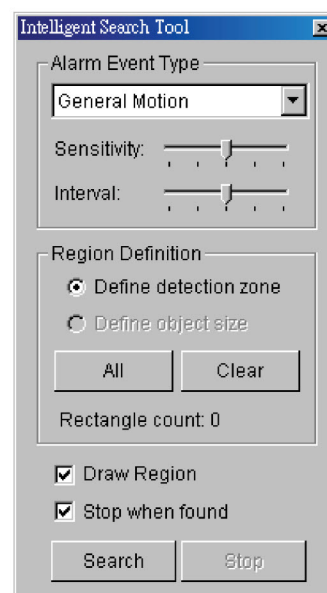
There are 5 types of unusual events: General Motion, Foreign Object, Missing Object, Lose Focus, and Camera Occlusion.

2.6.1 Unusual Event-General Motion

General Motion: Detect all movements in the defined area.

Define Detection Zone: Left click and drag to draw a detection zone. You may define more than one zone on the screen by repeating the process.

Sensitivity: Modify the sensitivity setting by changing the slider control. Move toward right will increase the sensitivity level, which means a relatively small movement will trigger the alarm; in contrast, move the slider control toward left will reduce the sensitivity for movement detection.



Set up an appropriate sensitivity level reduces the frequency of false alarm. For instance, you can lower the sensitivity to avoid the alarm being triggered by a swinging tree in the breeze.

Interval: Move the slider control to the **right to increase** time interval so that the alarm will only be triggered when the movement lasts longer. Move to the **left to reduce** the time interval.

Stop When Found: Check the option to have the video stopped when detecting motion in the detection zone. Uncheck the option to have

2. Playback

video kept rolling, and all detected events will show on the list in search result box. Click on the listed event in the box to jump to the point in the video where a motion is detected.

2.6.2 Unusual Event-Foreign Object

Foreign Object: Alarm is set off when any additional object appears in the defined area on the screen.

Define detection zone: Before detecting foreign object, it is required to define a detection area. In order to do so, left click and drag on the screen. Alarm will be triggered when any additional object appears in the detection zone.

Define object size: Drag and draw on the screen to define the size of a foreign object.

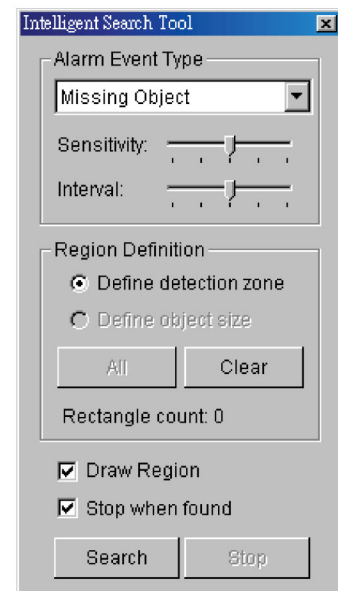
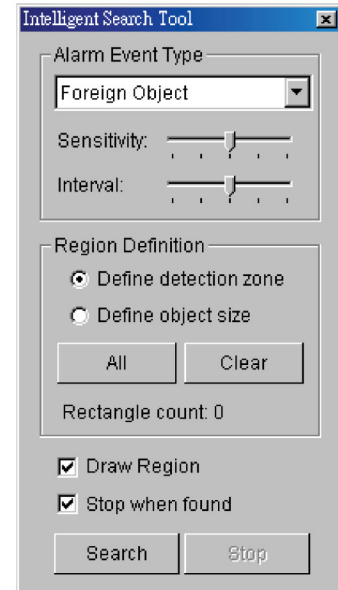
Sensitivity: Modify the sensitivity setting by changing the slider control. Move toward right will increase the sensitivity level, which means a relatively small movement will trigger the alarm; in contrast, move the slider control toward left will reduce the sensitivity for movement detection.

Interval: Click and move the slider control to the **right to increase** time interval so that the alarm will only be triggered when the object has been removed from the area for longer. Move to the **left to reduce** the time interval.

Set up an appropriate Interval value will reduce the chance of false alarm. For example, you can lower the Interval to avoid the alarm being triggered by a pedestrian.

2.6.3 Unusual Event-Missing Object

Missing Object: Alarm is set off when the selected object is removed from the defined area on the screen.



2. Playback

Define detection zone: Before detecting missing object, it is required to define a detection zone. Left click and drag to draw a detection zone. Alarm will be triggered when the defined object is removed from the detection zone.

Define object size: This tells the System how big the defined object is. Drag and draw a square that is about the same size as the object that you want to protect on the screen.

Sensitivity: Modify the sensitivity setting by changing the slider control. Move toward right will increase the sensitivity level and a relatively small movement will trigger the alarm; in contrast, move the slider control toward left will reduce the sensitivity for movement detection.

Interval: Click and move the slider control to the **right to increase** time interval so that the alarm will only be triggered when the movement lasts longer. Move to the **left to reduce** the time interval.

2.6.4 Unusual Event-Lose Focus/ Camera Occlusion

Lose Focus: System will inform you when the camera(s) lose its focus.

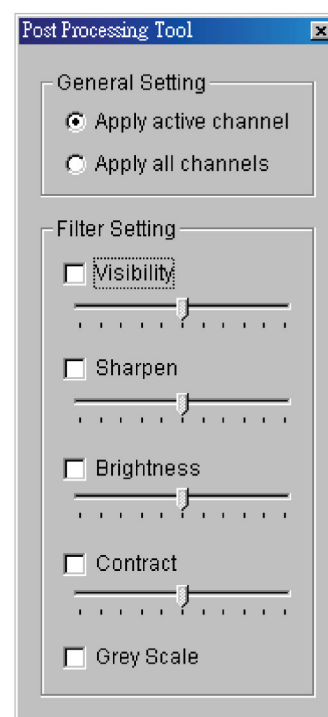
Camera Occlusion: Alarms when any of the cameras is blocked.

2.7 Enhancement

2.7.1 General Setting: Check the option and chose whether you want to apply the setting to all the channels or only to those currently shown on the screen.

2.7.2 Filter Setting

Visibility: Check the option and adjust the gamma value of the image to enhance the image and make it cleaner.



2. Playback

Sharpen: Check the option to activate the function. Move the slider control to the right to sharpen the image, to the left to soften it.

Brightness: Check the option to activate the function. Move the slider control to the right to make the image brighter.

Contrast: Check the option to activate the function. Move the slider control to the **right to increase** contrast.

Grey Scale: Check the option to show the record in grey scale mode so the image displays in black and white.

2.8 Save Video

Step 1: Click on the display screen to choose the camera display that you want to save as a video clip.

Step 2: Set up the cue in and cue out points; the cue in and cue out time will show on the information window.

Step 3: Click Save Video icon, choose the folder where you want to save the file at, enter the file name and click SAVE. You may export (i.e. save) the record with both audio and video or video only.

Step 4: Choose the compression format and then save the video.

2.9 Save Image

Step 1: Click on the display screen to choose the camera display from which you want to save pictures.

Step 2: Click Save Image button when the image you want is shown on the screen. You may click Pause to freeze the video, use Step Forward/ Step Backward function to find the picture(s) that you want to save.

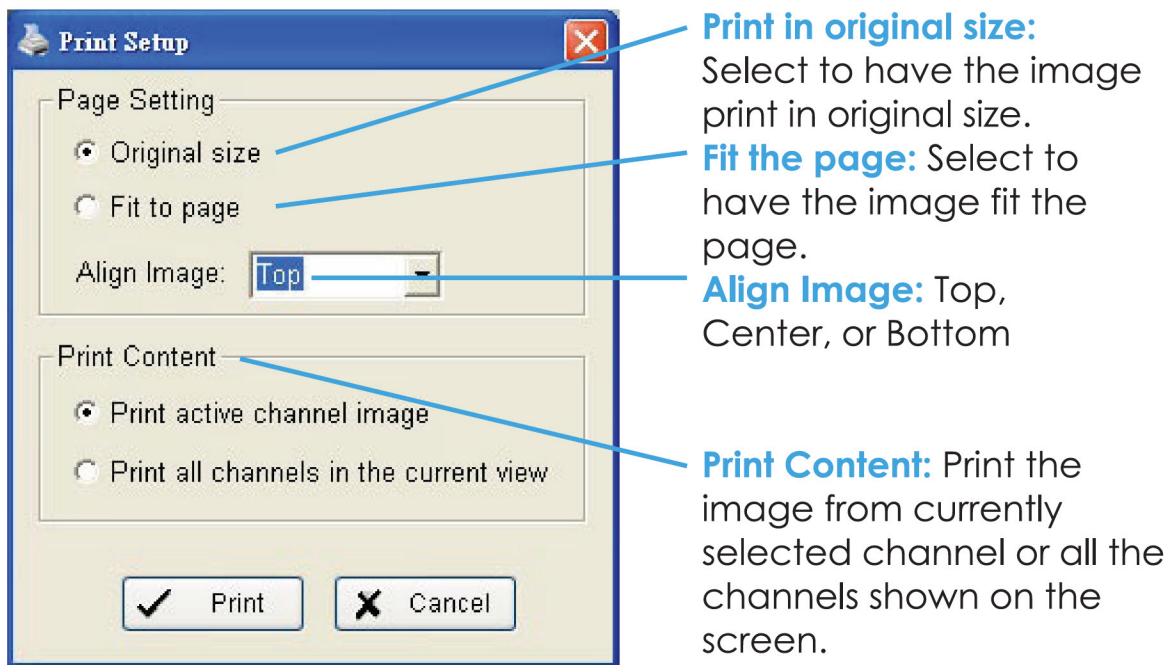
Step 3: Choose the folder and the format of image (BMP or JPEG) you prefer and then click save.

Note: You may skip step 3 by pre-setting a folder and format that you want to save the images.

2. Playback

2.10 Print

Print the current image of the video you choose.



2.11 Backup

Different from Save Video, the Backup function saves everything from the Playback panel, including log information.

You can start a full function Playback Console and load the backup files into it on any PC with Windows operating system. This means you may monitor the real time video and work on the backup files on separate computers simultaneously.

Step 1: Press the "Open Record" to select data and press "Backup".

Step 2: You can adjust the Start Time and End Time you want to backup.

Step 3: You can adjust the Cameras you want to backup.

Step 4: You can calculate the size of the backup data.

2. Playback

Step 2

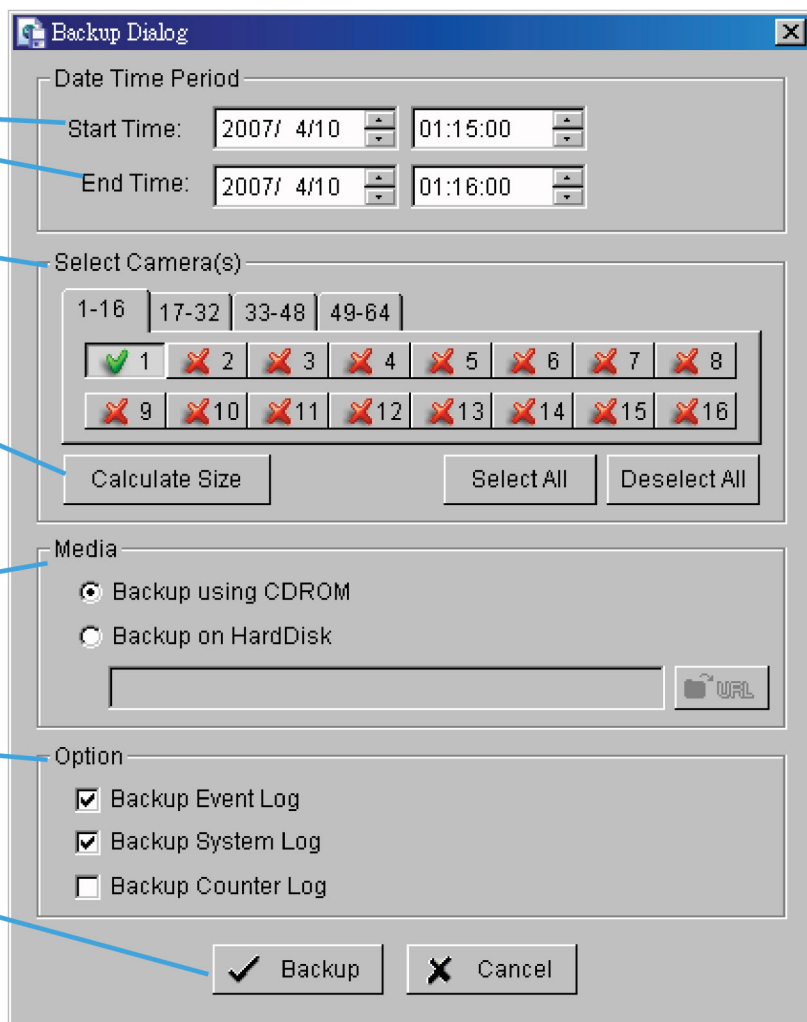
Step 3

Step 4

Step 5

Step 6

Step 7



Step 5: Select the directory you want to save the backup data.

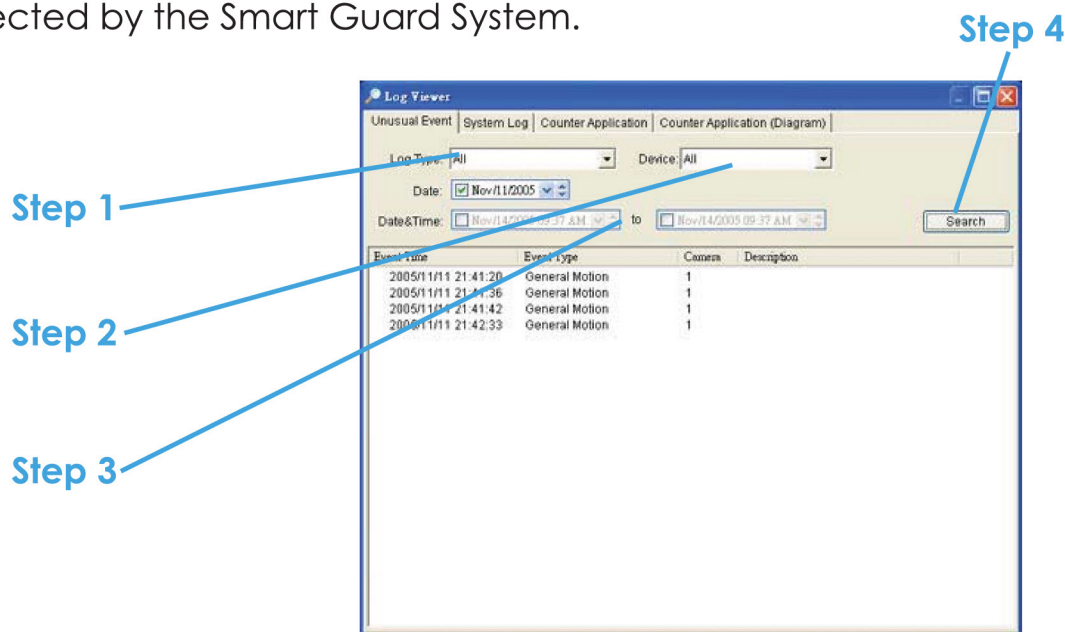
Step 6: Check the log you want to backup.

Step 7: Press the "Backup" to start backing up.

2. Playback

2.12 Log Viewer

2.12.1 Unusual Event: View the unusual event history that had been detected by the Smart Guard System.



Step 1: Choose the type of events you wish to view or select “All” from the drop-down menu to view all types of events.

Step 2: Choose the camera channel you wish to view or select “All” for all the channels available.

Step 3: You can either view the events that happened on a particular date or during a given time period. To search and view unusual event on a particular date, check the option right next to “Date” and select a specific date.

You may also point out two different time points and search for unusual event happened during the period. Check the options in the Date & Time columns and enter the date and time.

Step 4: Click Search

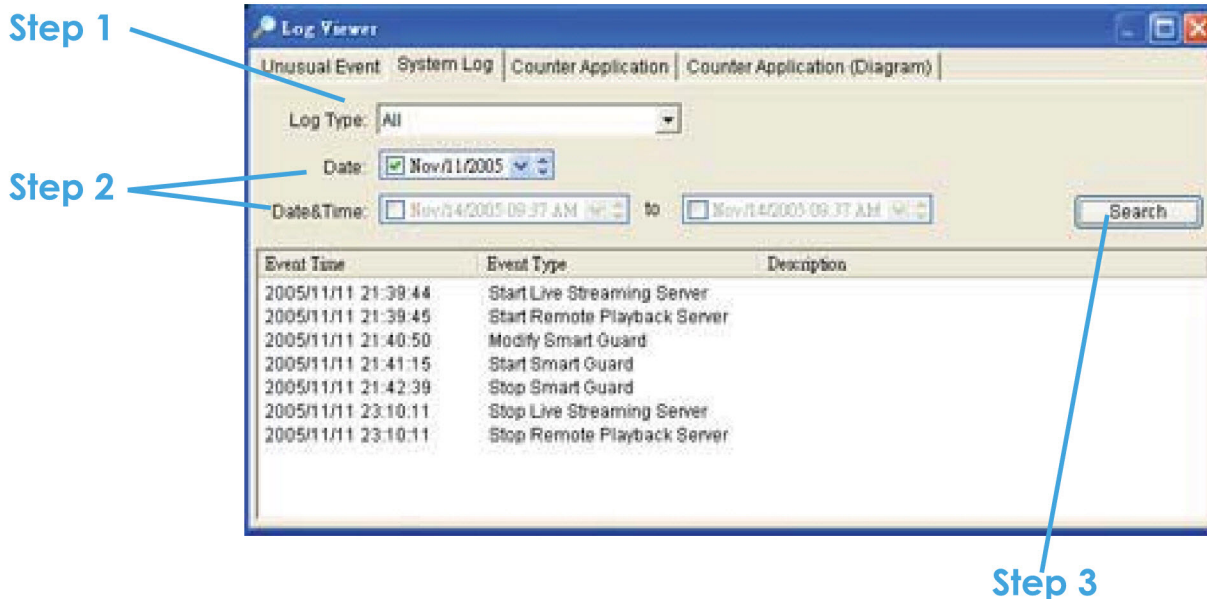
Note: When working with a video record,

1. Log Viewer will search for Unusual Event in the video record in Date & Time mode, start from the beginning to the end of the record, which is the default setting of the system.

2. Playback

2. A link will appear right next to each event time. By clicking on the link, the video will jump to the point where the unusual event takes place.

2.12.2 System Log: Select **Log Type** form the drop-down menu. There are total 11 types of log types, including:



1. Main Console Startup
2. Main Console Shutdown
3. User Login
4. User Login Failed
5. Start Schedule
6. Stop Schedule
7. Execute Recycle
8. Execute Backup
9. Enable Channel
10. Disable Channel
11. Start Smart Guard
12. Stop Smart Guard
13. Modify Smart Guard
14. Modify Schedule
15. Modify Configuration
16. Start Live Streaming Server
17. Stop Live Streaming Server
18. Modify Live Streaming Server
19. Start Remote Playback Server
20. Stop Remote Playback Server
21. Modify Remote Playback Server
22. IP Camera Connection Lost

Step 1: Choose the type of event you wish to check or select "All" from the drop-down menu and view all types of events.

Step 2: You can either view the events that happened on a particular date or during a given time period. To search and view unusual events on a particular date, check the option right next to "Date" and select a specific date.

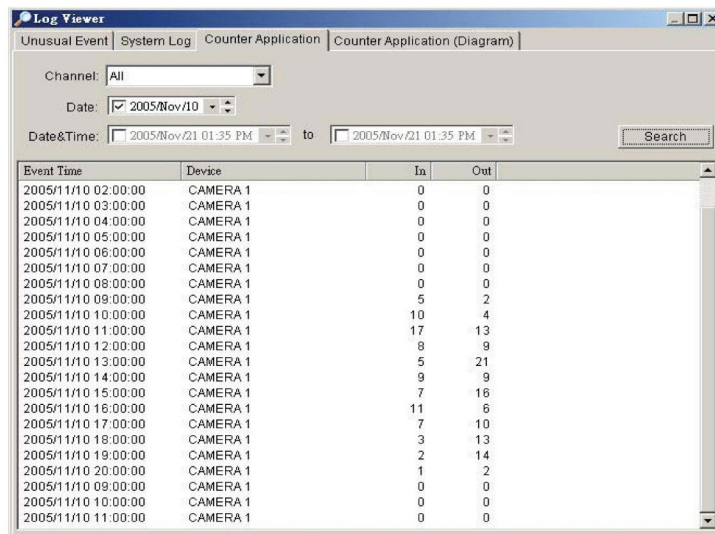
2. Playback

You may also point out two different time points and search for unusual event happened during the period. Check the options in the Date & Time columns and enter the date and time.

Step 3: Click **Search**.

2.12.3 Counting Application

You can see the results of Counting Application during the time period you set.

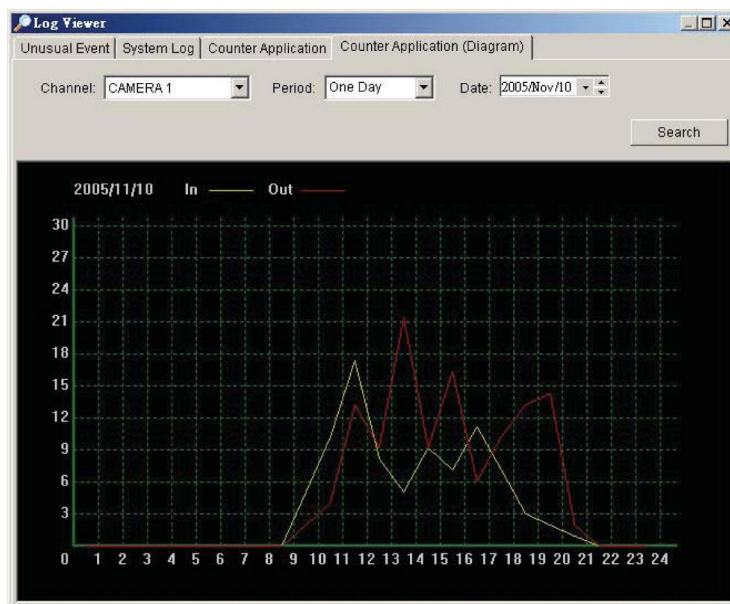


The screenshot shows the 'Log Viewer' application with the 'Counter Application' tab selected. The 'Counter Application (Diagram)' sub-tab is active. The interface includes a 'Channel' dropdown set to 'All', a 'Date' dropdown set to '2005/Nov/10', and 'Date&Time' fields set to '2005/Nov/21 01:35 PM' to '2005/Nov/21 01:35 PM'. A 'Search' button is visible. Below the search fields is a table with the following data:

Event Time	Device	In	Out
2005/11/10 02:00:00	CAMERA 1	0	0
2005/11/10 03:00:00	CAMERA 1	0	0
2005/11/10 04:00:00	CAMERA 1	0	0
2005/11/10 05:00:00	CAMERA 1	0	0
2005/11/10 06:00:00	CAMERA 1	0	0
2005/11/10 07:00:00	CAMERA 1	0	0
2005/11/10 08:00:00	CAMERA 1	0	0
2005/11/10 09:00:00	CAMERA 1	5	2
2005/11/10 10:00:00	CAMERA 1	10	4
2005/11/10 11:00:00	CAMERA 1	17	13
2005/11/10 12:00:00	CAMERA 1	8	9
2005/11/10 13:00:00	CAMERA 1	5	21
2005/11/10 14:00:00	CAMERA 1	9	9
2005/11/10 15:00:00	CAMERA 1	7	16
2005/11/10 16:00:00	CAMERA 1	11	6
2005/11/10 17:00:00	CAMERA 1	7	10
2005/11/10 18:00:00	CAMERA 1	3	13
2005/11/10 19:00:00	CAMERA 1	2	14
2005/11/10 20:00:00	CAMERA 1	1	2
2005/11/10 09:00:00	CAMERA 1	0	0
2005/11/10 10:00:00	CAMERA 1	0	0
2005/11/10 11:00:00	CAMERA 1	0	0

2.12.4 Counting Application (Diagram)

The Counting Application result data will show in a diagram.



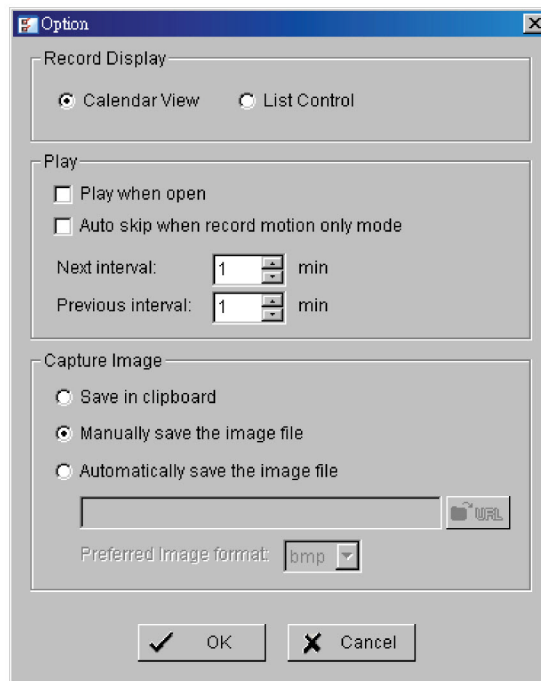
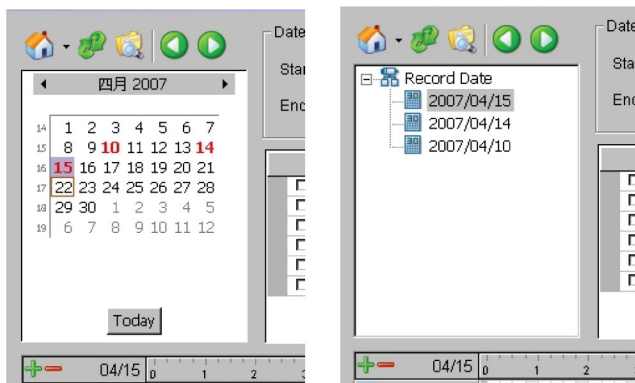
2. Playback

2.13 Setting

2.13.1 Record Display

Calendar View: Make the record display windows as calendar view.

List Control: Make the record display windows as list control.



2.13.2 Play

Play when open: Check the option and set the system to start playing the video clip every time when a record is withdrew.

Auto skip when record motion only mode: Check the option to set up the system to automatically skip to the points where there were motions recorded.

Next interval: Set the interval with which the video goes forward when you click on the Next icon on the control panel.

Previous interval: Set the interval with which the video goes backward when you click on the Previous icon on the control panel.

2.13.3 Capture Image: Setup how you want to save image.

Save in clipboard: The image will be saved in the clipboard and can be pasted on other application software.

2. Playback

Manually save the image file: You can manually select where you want to save the image, name the saved file, and choose the format you want to save the image.

Automatically save the image file: By pre-setting a path/URL and the image format, the system will automatically save the image accordingly when you click the Save button in the control panel.

2.14 Remote Server

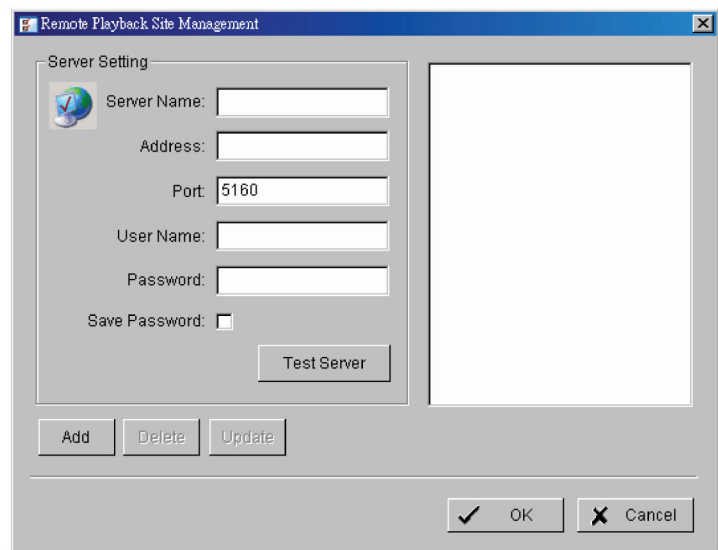
2.14.1 Add Remote Playback Site

Pressing the “Remote Server” can go to remote playback site management to add and setup the remote playback site.


Step 1: Enter the IP address or DNS, Port, Username, and Password.

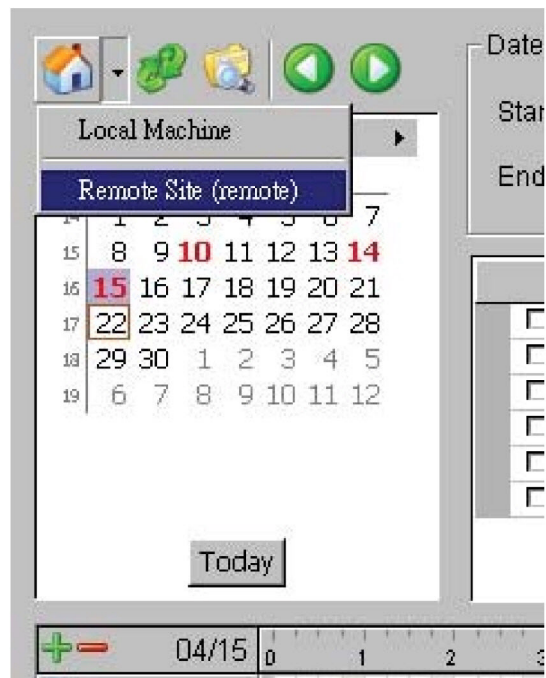
Step 2: Click “Add” to add the server.

Step 3: Click OK to exit the Setting panel.



2.14.2 Access Remote Playback Site

Go to Date Time Panel and click on the  icon on the top of the display window to access the Remote Playback Site



6. Remote Live Viewer

6. Remote Live Viewer



With the Remote Live Viewer console, remote users may watch real-time video from remote live streaming servers.

6. Remote Live Viewer

6.1 Setup Panel



Click on the setup icon to obtain the setup panel

6.1.1 Setup Panel—Server

Name the server

Enter the server IP Address

Enter the connecting port of the server

Enter the user name and password

Check the box to automatically log in the server when starting Live Viewer

Test the server first to see if the settings are correct

Click "Add" and the server will appear on the list

6. Remote Live Viewer

6.1.2 Setup Panel—Group

You may put different cameras into the same group

Step 1: Go to the Group tab of the LiveView Setting panel.

Step 2: Log in to all the servers that contain the camera(s) you would like to put into the group(s).

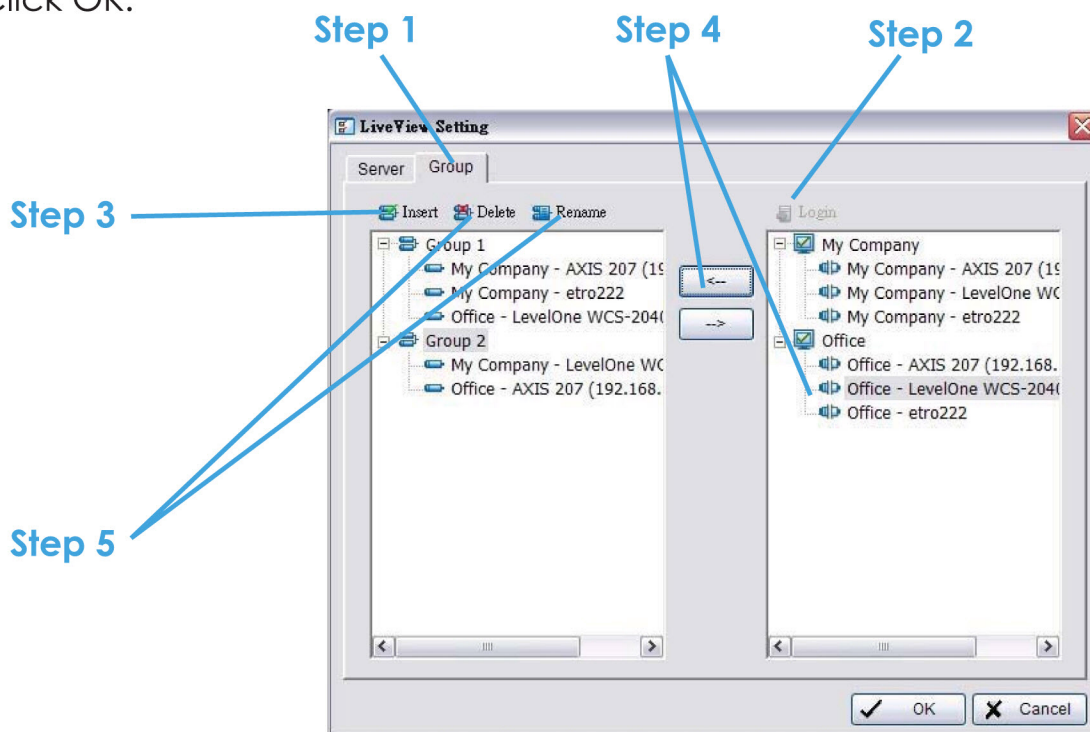
Step 3: Click “Insert” to create a new group; name the group for future reference.

Step 4: From the window at the right, highlight the camera(s) that you would like to add to a group and then click on the “<--” button. Repeat the process until you are satisfied with the group setting.

Step 5: Click on the Delete and Rename button to remove or rename a specific group.

Step 6: Repeat Step 3 to 5 until you are done with creating and setting groups.

Step 7: Click OK.



6. Remote Live Viewer

6.2 Show Camera(s) On the Display Screen

Select a camera(s) from the server/ camera list on the right and then drag it to where you want the image to be displayed.

On the server/ camera list, right click on a camera to connect/ disconnect it.



6.2.1 Log In/ Log Out: Select a server or a group and click on the log in/ out icon to access/ leave the server. You may also log in/ out from the server by right clicking on it.

6.2.2 Server and Camera List: Display a complete list of the server(s) and camera(s) that are added to the system.

6.2.3 PTZ Camera Control: You may control the camera view by utilizing the PTZ camera control panel to adjust the camera's view. This is only available with cameras that support PTZ function.

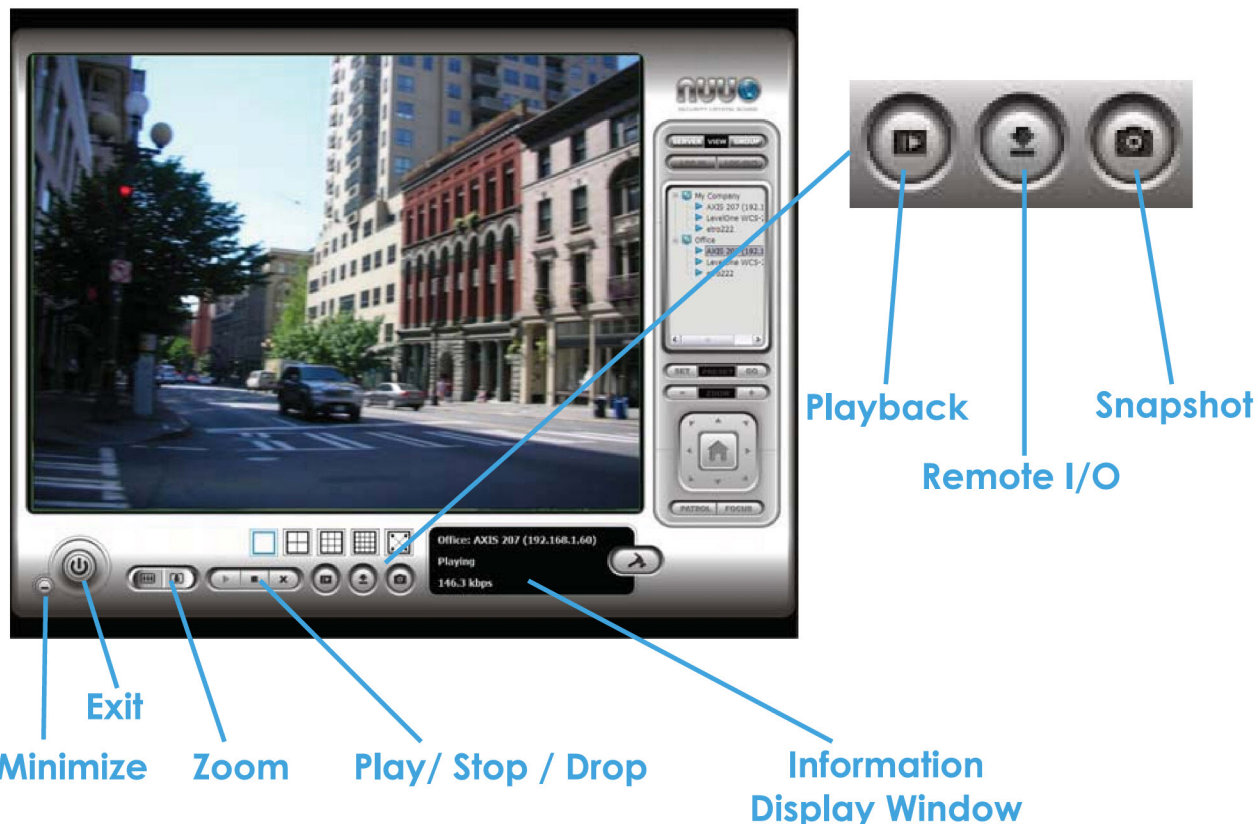


Log In/ Log Out
(Server/ Group)

Server and Camera List

PTZ Camera Control

6. Remote Live Viewer



6.2.4 Minimize: Minimize the Remote Live View Console window.

6.2.5 Exit: Shut down the system or log out current user.

6.2.6 Digital Zoom: Click on the + and – signs to zoom in and out the view.

6.2.7 Play / Stop / Drop: Select a camera/ video and click on this button to play/stop/disconnect a particular channel.

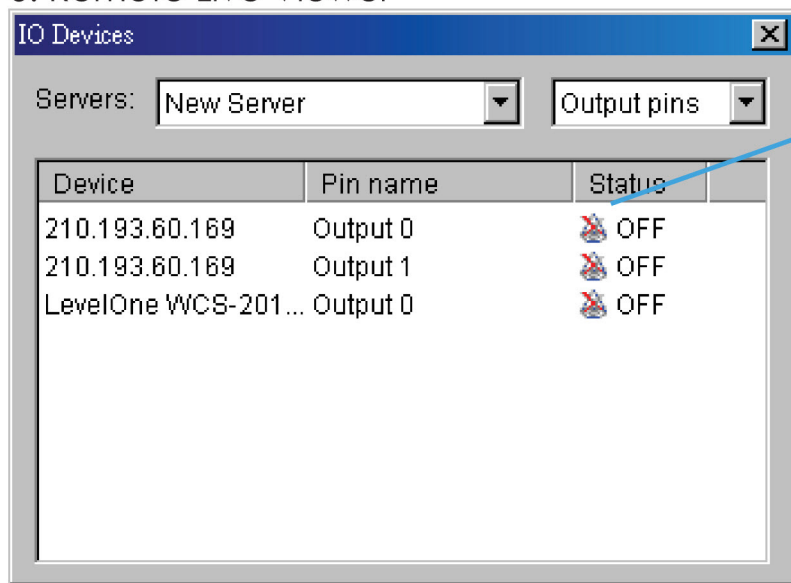
6.2.8 Information Display Window: Display video information including server name, video current status, and bit rate for a selected channel.

6.2.9 Playback: View playback video remotely.

6.2.10 Remote I/O: Utilize I/O device function remotely.

- User can remote adjust the Output Pins by turning it on or off

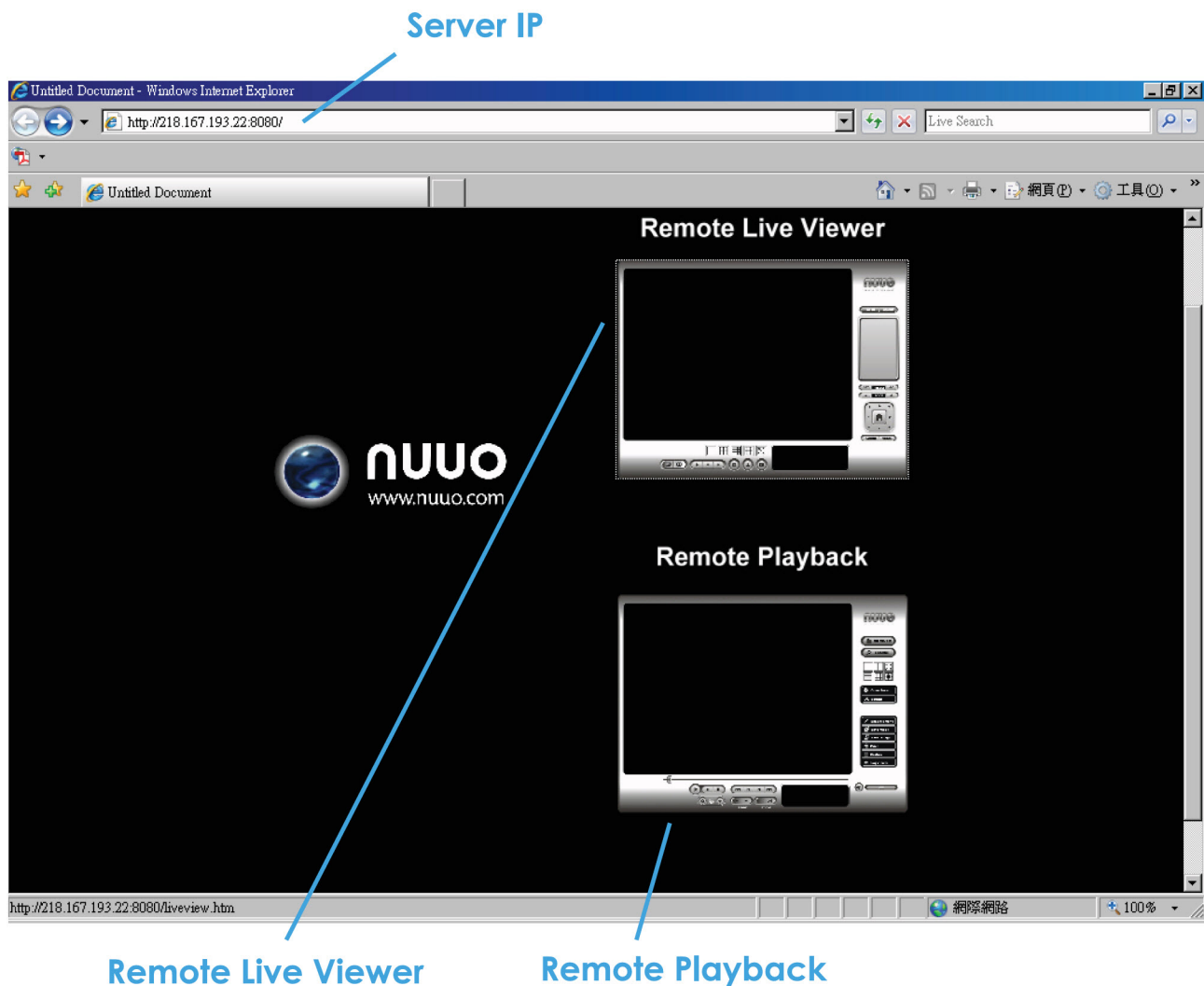
6. Remote Live Viewer



Click to turn on/off the "Output" pins

6.2.11 Snapshot: Select the snapshot function to capture a specific video image immediately.

7. Web View



Note: Must make sure the Live Stream Server is enabled. Check 5.1.3 Network Service for more detail.

7.1 Server IP: Open an Internet Explorer browser and enter the IP address or DDNS "name" of the server followed by the connecting port.
Example: <http://192.168.1.16:8080/>

Note: 192.168.1.16 is the IP address of the server.
8080 is the port specified in "Use Default Web Server" in Network Service.

7. Web View

7.2 Remote Live Viewer: Press this icon to use Remote Live Viewer which functions are the same as Remote Live Viewer. See page 100.

7.3 Remote Playback: Press this icon to use Remote Playback which functions are the same as Playback but remote server and backup functions. See page 21.